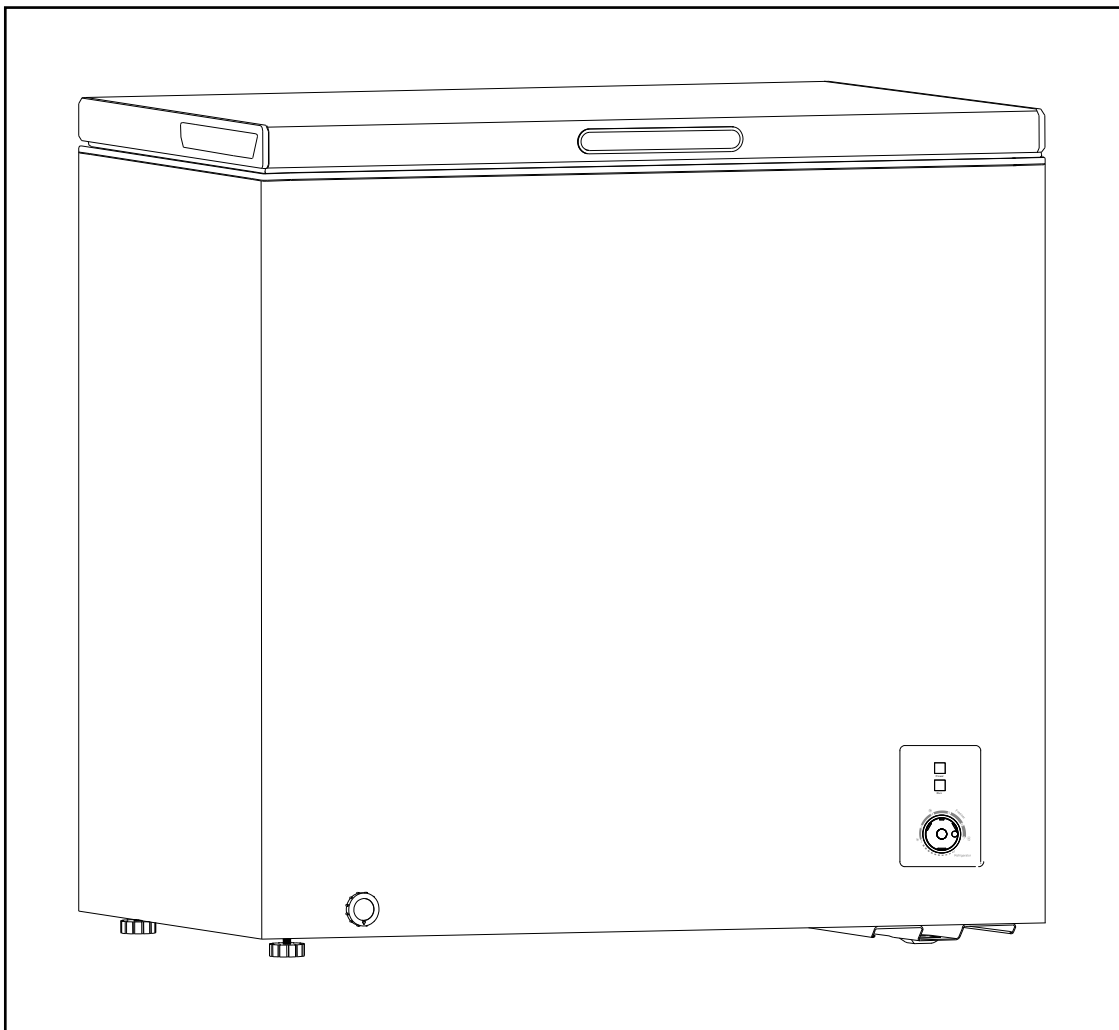


baridi

Freestanding Chest Freezer Series, 99L, 142L and 199L Black and White



Models: DH111.V2, DH116.V2, DH120.V2, DH151.V2, DH152.V2 & DH153.V2

Thank you for purchasing a Dellonda product. Manufactured to a high standard, this product will, if used according to these instructions, and properly maintained, give you years of trouble free performance.

IMPORTANT INFORMATION

Please read these instructions carefully. Note the safe operational requirements, warnings & cautions. Use the product correctly and with care for the purpose for which it is intended. Failure to do so may cause damage and/or personal injury and will invalidate the warranty. Keep these instructions safe for future use.



Refer to
instructions



Indoor use
only



Warning:
flammable
material

• ELECTRICAL SAFETY

- **WARNING!** It is the user's responsibility to check the following:
- Check all electrical equipment and appliances to ensure that they are safe before using. Inspect power supply leads, plugs and all electrical connections for wear and damage. Dellonda recommend that an **RCD** (Residual Current Device) is used with all electrical products.
- Electrical safety information: It is important that the following information is read and understood.
- Ensure that the insulation on all cables and on the appliance is safe before connecting it to the power supply.
- Regularly inspect power supply cables and plugs for wear or damage and check all connections to ensure that they are secure.
- **Important:** Ensure that the voltage rating on the appliance suits the power supply to be used and that the plug is fitted with the correct fuse - see fuse rating in these instructions.
- **DO NOT** pull or carry the appliance by the power cable.
- **DO NOT** pull the plug from the socket by the cable.
- **DO NOT** use worn or damaged cables, plugs or connectors.
- Ensure that any faulty item is repaired or replaced immediately by a qualified electrician.
- If the cable or plug is damaged during use, switch off the electricity supply and remove from use.
- Ensure that repairs are carried out by a qualified electrician.

• GENERAL SAFETY

- **WARNING:** When positioning the appliance, ensure the supply cord is not trapped or damaged. If the supply cord is damaged, it must be replaced by the manufacturer, its service agent or similarly qualified persons in order to avoid a hazard.
- Keep ventilation openings, in the appliance enclosure or in the built-in structure, clear of obstruction.
- **DO NOT** use mechanical devices or other means to accelerate the defrosting process, other than those recommended by the manufacturer.
- **DO NOT** damage the refrigerant circuit.
- **DO NOT** use electrical appliances inside the storage compartment of the appliance i.e. hair dryers, heater elements etc.
- **DO NOT** store explosive substances such as aerosol cans with a flammable propellant in this appliance.
- **WARNING: DO NOT** locate multiple portable socket-outlets or portable power supplies at the rear of the appliance.
- To avoid a hazard due to instability of the appliance, it must be fixed in accordance with the instructions.
- This appliance is intended to be used in household and similar applications such as:
 - - staff kitchen areas in shops, offices and other working environments;
 - - farm houses and by clients in hotels, motels and other residential type environments;
 - - bed and breakfast type environments;
 - - catering and similar non-retail applications.
- This appliance can be used by children aged from 8 years and above and persons with reduced physical, sensory or mental capabilities or lack of knowledge and experience if they have been given supervision or instruction concerning the use of the appliance in a safe way and understand the hazards involved. Children shall not play with the appliance. Cleaning and user maintenance shall not be made by children without supervision.
- Children aged from 3 to 8 years are allowed to load and unload refrigerating appliances.
- To avoid contamination of foodstuffs, please respect the following instructions:
 - - Opening the door for long periods can cause a significant increase of the temperature in the compartment of the appliance.
 - - Clean regularly surfaces that can come in contact with drink and accessible drainage systems.
- - If the appliance is left empty for long periods, switch off, defrost, clean, dry, and leave the lid ajar to prevent mould developing within the appliance.

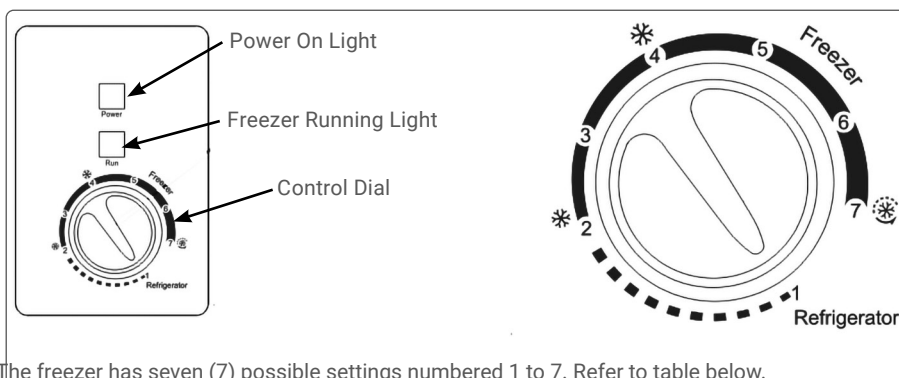
• SPECIFICATION

	DH111.V2 / DH151.V2	DH120.V2 / DH152.V2	DH116.V2 / DH153.V2
Capacity	199L	142L	99L
Colour	White	White / Black	White / Black
Defrost Method	Manual	Manual	Manual
Energy Efficiency Class	E	E	E
Frequency	50Hz	50Hz	50Hz
Fuse Rating	5A	5A	5A
Operating Sound Level	Max 39dB	Max 39dB	Max 39dB
Power Cable Length	2.3m	2.3m	2.3m
Product Dimensions (WxDxH)	823x556x835mm	635x556x835mm	545x476x835mm
Rated Current	1A	0.5A	0.36A
Temperature Range	-12°C to -24°C	-12°C to -24°C	-12°C to -24°C
Type	Chest Freezer	Chest Freezer	Chest Freezer
Voltage	220-240V	220-240V	220-240V

• INSTALLATION

- The unit is designed to be free-standing. Ventilation Space - a minimum space of 100mm is required for the front, rear and both sides of the freezer. This will maximise the efficiency, performance and the life of the freezer and also ensure that there is sufficient space for the hinge to operate effectively.
- Locate the unit away from direct sunlight or sources of heat i.e. radiator, stove etc. Extreme or cold ambient temperatures may also prevent the unit working effectively.
- **DO NOT** locate the unit in a damp or moist location.
- Ensure that the floor surface is strong and stable enough to support the unit when it is fully loaded.
- Level the unit when in location by using the adjustable levelling feet in each corner.
- Once in position allow the unit to rest for an hour before switching it on.
- Allow the unit 2-3 hours to reach set temperature after switching on before placing any items in the compartment.

• OPERATION

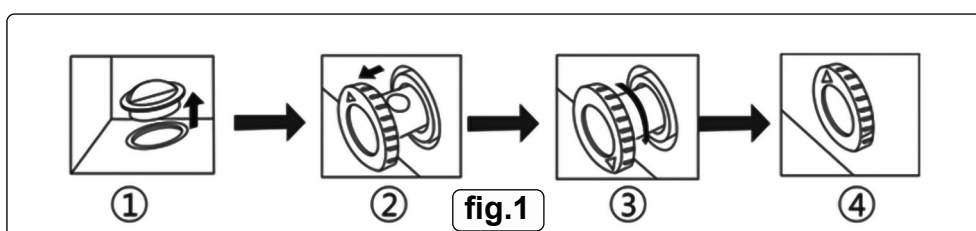


- The freezer has seven (7) possible settings numbered 1 to 7. Refer to table below.
- **NOTE:** Temperature values achieved can vary between +3°C / -3°C.

Setting	Function	Temperature Range
1	Refrigerator	5°C
2 - 4	Freezer	-12°C~-18°C
4 - 7	Freezer	-18°C~-24°C

- **NOTE:** In Fast Freezer mode, the unit will run continuously. When the required freezing effect has been achieved, select a lower value.

• DEFROSTING (see fig.1)



- **WARNING:** Switch off freezer and remove the power plug from the supply when performing defrosting, cleaning or maintenance.
- Remove rubber cover from drain hole inside the freezer compartment.

- Place suitable water container under the drain cover in the lower left corner of the front panel, remove the drain cover, withdraw the drain body and rotate it such that the drain hole is placed above the water container.
- Reverse the procedure when operation is complete.

- **MAINTENANCE**

- **WARNING:** Remove the power plug from the supply when performing cleaning or maintenance.
- **DO NOT** use abrasive or chemical cleaning materials on any surface of the unit.
- Wipe interior and exterior surfaces with a damp cloth and dry thoroughly with a clean dry cloth.
- For more soiled surfaces use a neutral detergent, wipe down with a clean damp cloth and dry thoroughly with a clean dry cloth.

Environment Protection and Waste Protection and Electrical Equipment Regulations (WEEE)

Recycle unwanted packaging materials. When this product is no longer required, or has reached the end of its useful life, please dispose of it in an environmentally friendly way. Drain any fluids (if applicable) into approved containers, in accordance with local waste regulations. It is our policy to continually improve products and we reserve the right to alter data, specifications and parts without prior notice. No liability is accepted for incorrect use of this product. Guarantee is 12 months from purchase date, proof of which is required for any claim.

Dellonda Limited, Sole UK Distributor of Baridi

Kempson Way, Suffolk Business Park, Bury St Edmunds, Suffolk. IP32 7AR



01284 757575



support@dellonda.co.uk



www.dellonda.co.uk

Product Information Sheet. Refrigerating Appliances

SUPPLIER_NAME_OR_TRADEMARK Dellonda EU Ltd. DELEGATED_ACT EU/2019/2016
 MODEL_IDENTIFIER DH111
 Baridi, Freestanding Chest Freezer, 199L, Garage and Outbuilding Safe, Adjustable
 Thermostat, White
 ADDRESS Farney Street, Carrickmacross, Co. Monaghan, A81 PK68 Ireland
 PHONE_NUMBER 01284 757 500
 EMAIL_ADDRESS TechnicalCompliance@dellonda.co.uk

Parameter Verification tolerances

Low-noise appliance	No	Design type	Freestanding
Wine storage appliance	No	Other refrigerating appliance	No

General product parameters

Height mm	835	Total volume. Litres.	199
Width mm	853		
Depth mm	556		
EEL	100	Energy efficiency class	E
Airborne acoustical noise emissions (dB(a) re 1 pW	39	Airborne acoustical noise emission class	C
Annual energy consumption kWh/a	200.00	Climate class	N/ST

SN = extended temperate(10-32°C)

N = temperate 16-32°C

ST = subtropical 16-38°C

T = tropical 16-43°C]

Minimum ambient temperature (°C) for which the refrigerating appliance is suitable.	16	Maximum ambient temperature (°C) for which the refrigerating appliance is suitable.	38
Winter setting	No		

Compartment type

Volume.
Litres.

Recommended temperature setting for optimised food storage

(kg/24 h)

(auto = A Manual = D)

Freezing capacity

Defrosting type

Pantry	No				
Wine storage appliance	No				
Beverage / Beer cooler	No				
Cellar	No				
Fresh food	No				
Chill	No				
0-star or ice-making	No				
1-star	No				
2-star	No				
3-star	No				
4-star	Yes	199.0	-18	9.00	M
2-star section	No				
Variable temperature compartment	Compartment types				

4-star compartments

Light source parameters

Fast freeze facility	No	Type of light source	LED
		Energy efficiency class	Exempt
		Minimum duration of guarantee (years)	1

Suppliers website <https://www.dellonda.co.uk/>